



Gladstone
Healthy Harbour
Partnership

CORAL



FIVE FAST FACTS

1. Coral is an indicator under the environmental component of the Gladstone Harbour Report Card.
2. Coral reefs provide spawning, nursery and feeding areas for fish and other marine creatures like sea cucumbers, molluscs and turtles.
3. Threats to coral reefs include both natural and anthropogenic pressures that can operate at global, regional or local scales.
4. The coral grade **DECREASED** from a D in 2017 to an E in 2018.
5. In Gladstone Harbour coral reefs are monitored around Rat, Facing and Curtis islands and at Seal Rocks.

THE GRADES

2016	2017	2018	Grading system
E	D	E	A Very good (0.85 - 1.00)
			B Good (0.65 - 0.84)
			C Satisfactory (0.50 - 0.64)
			D Poor (0.25 - 0.49)
			E Very poor (0.00 - 0.24)

HOW IS CORAL MEASURED?

Coral surveys in Gladstone Harbour are conducted by a small team of divers and scientists from the Australian Institute of Marine Science.

Four coral indicators are measured to calculate scores for the Gladstone Harbour Report Card:

1. **Coral cover** — determines how much coral (hard & soft) are at each of the monitoring sites.
2. **Macroalgal cover** — large fleshy seaweeds (Macroalgae) compete with coral for space on the reef. The more macroalgae the lower the report card score.
3. **Juvenile coral density** — investigates the potential ability of a coral reef to recover from a disturbance. A high score for juvenile coral density indicates that a reef is growing.
4. **Change in hard coral cover** — measures the change in coral cover from one year to the next and allows long-term trends to be recorded.

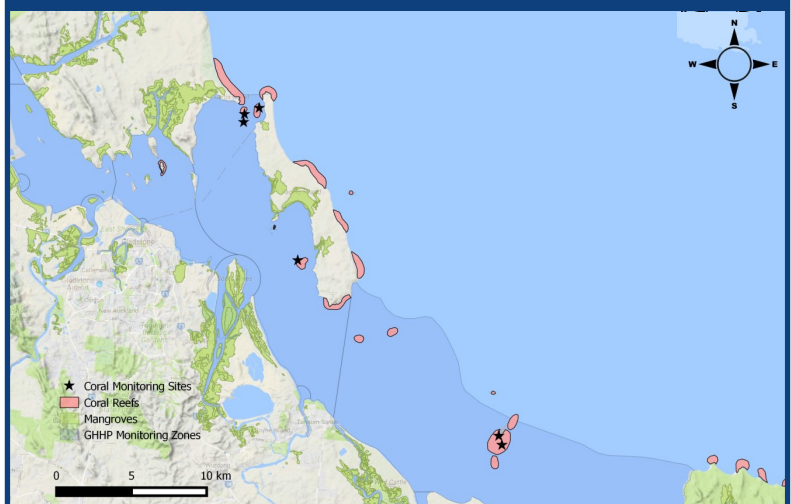
WHAT DO THE GRADES MEAN?

The grade for coral in Gladstone Harbour has changed from poor to very poor.

While all four coral indicator scores remained broadly similar to 2017, the cumulative effect of slightly poorer scores across these indicators has resulted in the shift of the grade.

The 2018 monitoring suggests that the impacts of flooding in 2013, other ongoing pressures and flooding in 2017, have reduced the potential for the coral communities in Gladstone Harbour to recover.

CORAL SITES MONITORED BY GHHP



Coral is monitored in two GHHP zones: Mid Harbour and Outer Harbour

GHHP Partner, AIMS was a direct contributor to this indicator

For more information on coral monitoring in Gladstone Harbour visit www.ghhp.org.au or visit our Facebook page.