



Gladstone  
Healthy Harbour  
Partnership



# 2024 GLADSTONE HARBOUR REPORT CARD

Independently monitoring  
& reporting on the health of  
Gladstone Harbour

*Healthy Harbour, Healthy Future*

# REPORT CARD MONITORING

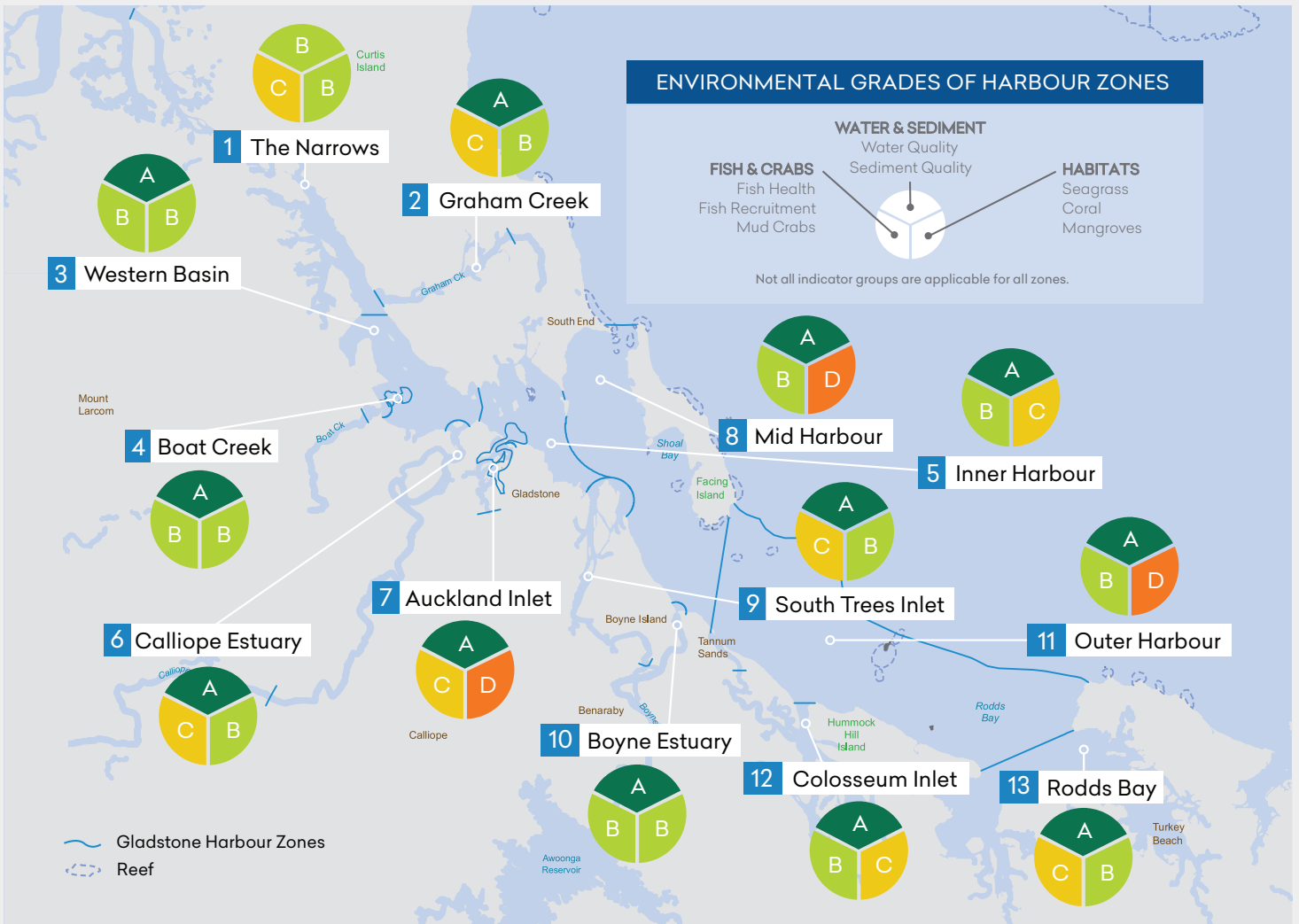
The 2024 Gladstone Harbour Report Card presents monitoring data collected from July 2023 to June 2024. It includes updated results for all Environmental indicators, and the Economic Performance and Economic Stimulus indicators. There are no new assessments for Social and Cultural indicators this year, as these have remained stable annually. The next assessment of Social and Cultural indicators is scheduled for 2025.

## ENVIRONMENTAL RESULTS



ENVIRONMENTAL	SCORE	GRADE
<b>OVERALL ENVIRONMENTAL</b>	<b>0.67</b>	<b>B</b>
<b>WATER AND SEDIMENT QUALITY</b>	<b>0.89</b>	<b>A</b>
• Water Quality	0.83	B
• Sediment Quality	0.96	A
<b>HABITATS</b>	<b>0.48</b>	<b>D</b>
• Seagrass	0.68	B
• Coral	0.14	E
• Mangroves	0.63	C
<b>FISH AND CRABS</b>	<b>0.62</b>	<b>C</b>
• Fish Health	0.84	B
• Fish Recruitment	0.57	C
• Mud Crab	0.46	D

In 2024, Environmental Health improved to a good (B) grade, up from satisfactory (C) in 2023. Water and Sediment Quality maintained a very good (A) grade. In contrast, the Habitats grade remained poor (D) largely due to the low score for Coral. On a positive note, scores for Seagrass and Mangroves both increased this year, with Seagrass improving from a satisfactory (C) to a good (B) grade. Fish and Crabs received a satisfactory (C) grade. Fish health remained stable, while the Fish Recruitment score increased and improved to a satisfactory (C) grade. Mud crabs scored slightly lower than 2023, declining to a poor grade (D).



## SOCIAL RESULTS



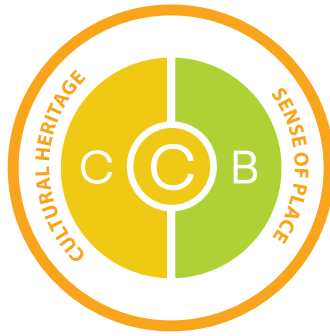
uses previous results



high confidence

There was no new Social assessment in 2024, with results carried forward from the 2022 Report Card. New assessment is due to take place in 2025.

## CULTURAL RESULTS



uses previous results



Cultural Heritage: low confidence



Sense of Place: high confidence

There was no new Cultural assessment in 2024, with results carried forward from 2022 (Sense of Place) and 2018 (Indigenous Cultural Heritage). New assessment is due to take place in 2025.

## ECONOMIC RESULTS



unchanged



high confidence

In 2024, Economic Health retained a good (B) grade. Economic Performance received a very good (A) grade, boosted by high scores in Shipping and Tourism, despite a low score in commercial fishing. Economic Stimulus earned a satisfactory (C) grade, reflecting a decline due to a drop in Employment. Economic Value was not assessed this year and used 2022 results instead.

GHHP is excited to partner with **Port Curtis Coral Coast Trust (PCCC)** on redeveloping the Indigenous cultural heritage indicator. PCCC will lead the creation of a significant and meaningful Traditional Owner Values assessment, which will be featured in the 2025 report card. Stay tuned for updates!

## GRADING, CONFIDENCE & TRENDS

This report card grades 33 indicators based on 107 different measures of Gladstone Harbour's Environmental, Social, Economic, and Cultural health. Each component and indicator group is graded A, B, C, D, or E according to its specific scores. Confidence in these grades is assessed via the Independent Science Panel, and includes data accuracy, consistency in monitoring methods and frequency, baseline datasets, and stability of the process. Detailed data quality information is in the Technical Report. Changes to grades from the 2023 Report Card are noted as improved, declined, unchanged, or carried over from previous results.

### GRADING SYSTEM

- A Very good (0.85–1.00)
- B Good (0.65–0.84)
- C Satisfactory (0.50–0.64)
- D Poor (0.25–0.49)
- E Very poor (0.00–0.24)

### CONFIDENCE

low → high

### CHANGE (2023 - 2024)

- improved
- declined
- unchanged
- uses previous results

## LITTER AND MARINE DEBRIS

### WHO

Australian Marine Debris Initiative, collected by volunteers through Tangaroa Blue Foundation clean-up projects.

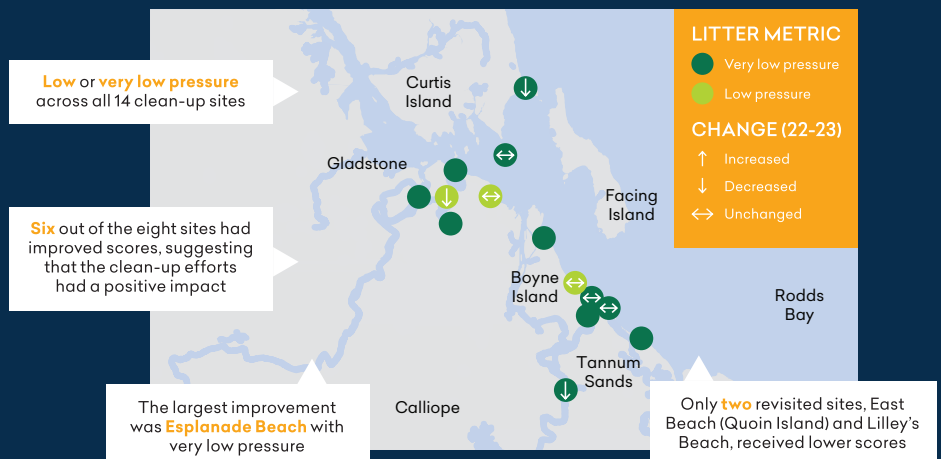
### WHAT

Impact of litter on environments – total litter collected today compared to a 10-year historic baseline.

### WHEN

Collections occurred between July 2022 – June 2023.

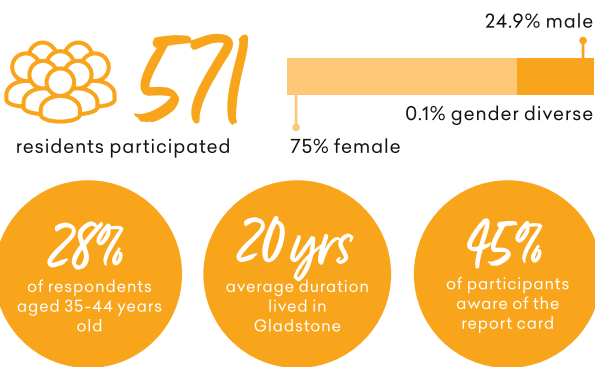
## RESULTS AND HIGHLIGHTS



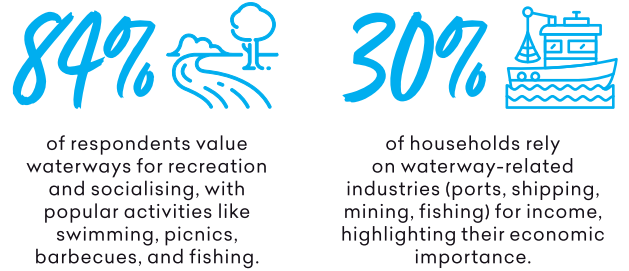
GHHP acknowledges the Australian Marine Debris Initiative®, Tangaroa Blue Foundation®, the community organisations, and individuals involved in the collection and the provision of data used in this report. This includes ReefClean which is funded by the Australian Government's Reef Trust and delivered by Tangaroa Blue Foundation in partnership with Reef Check Australia, Capricornia Catchments, Eco Barge Clean Seas, OceanWatch Australia, South Cape York Catchments and Australian Microplastics Assessment Project.

# MONITORING HUMAN DIMENSIONS IN THE GLADSTONE REGION

## WHO WE SURVEYED



## ECONOMIC BENEFITS

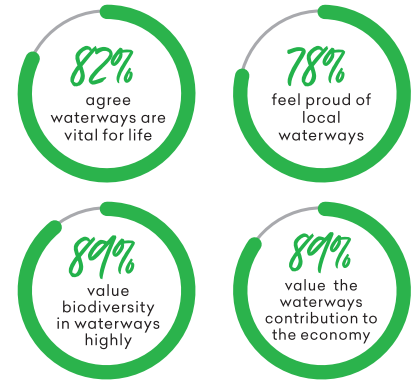


## PEOPLE

### WORDS ASSOCIATED WITH LOCAL WATERWAYS

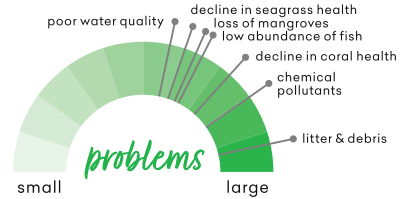
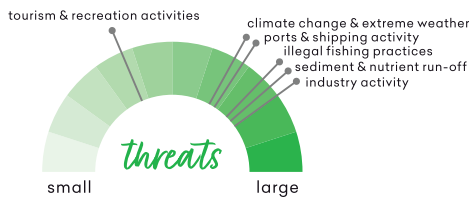
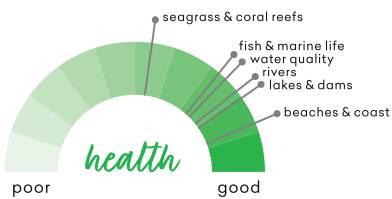


### BENEFITS & VALUES



### PERCEPTIONS

#### PERCEIVED RATINGS OF HEALTH, THREATS AND PROBLEMS ACROSS DIFFERENT ELEMENTS OF GLADSTONE'S WATERWAYS



### STEWARDSHIP

#### PERCENTAGE OF STEWARDSHIP ACTIONS UNDERTAKEN



#### FACTORS INFLUENCING STEWARDSHIP



## MANAGEMENT

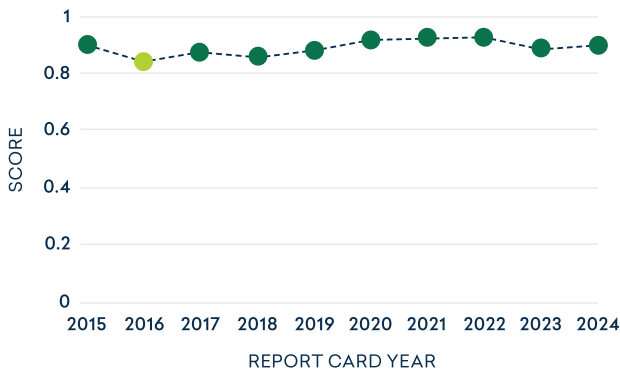
### PERCEIVED AGREEMENT WITH MANAGEMENT INITIATIVES (ON SCALE OF ONE-TEN)



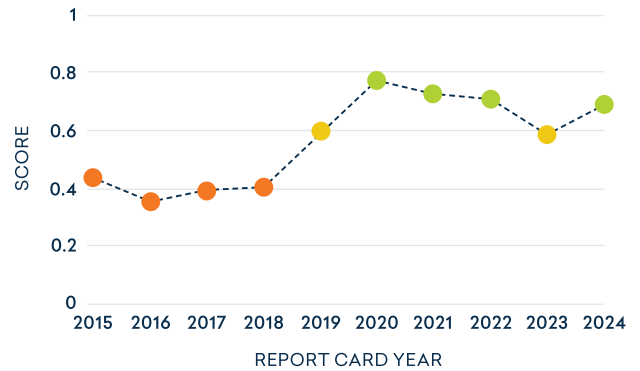
# TEN-YEAR REPORT CARD TRENDS

Long-term data availability provides an opportunity for an assessment of trends over time. While the Economic, Cultural, and Social components of the Gladstone Harbour Report Card remain stable, some indicators or sub-indicators of the Environmental component show more variability, such as Mud Crabs, Fish Recruitment, and Seagrass. In contrast, the Water and Sediment Quality indicator remains stable.

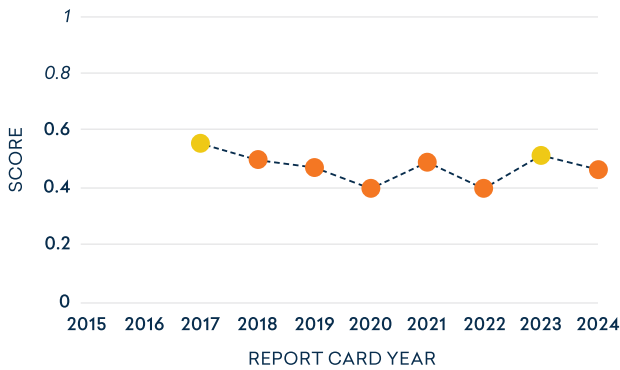
## WATER AND SEDIMENT QUALITY



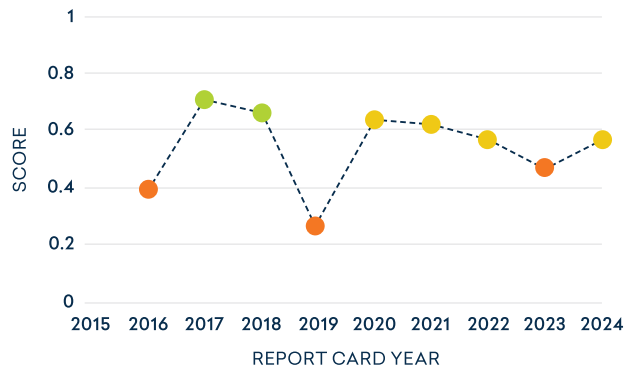
## SEAGRASS



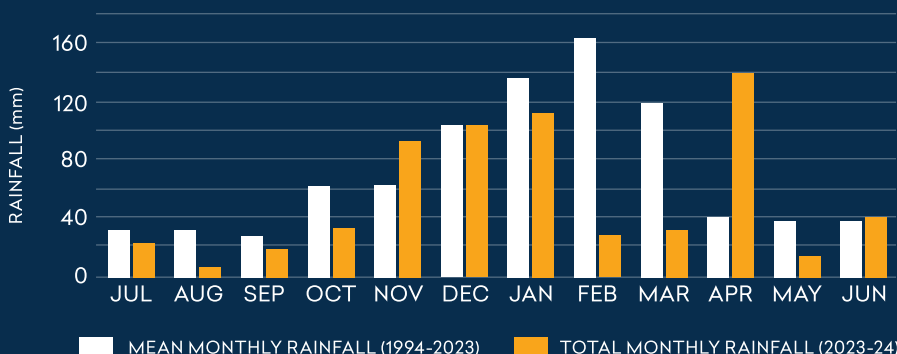
## MUD CRABS



## FISH RECRUITMENT



## RAINFALL RECORDED AT GLADSTONE AIRPORT



## RAINFALL

Large rainfall events and extended dry seasons can impact the health of the harbour. In the monitoring period of the 2024 Report Card, annual rainfall at Gladstone Airport was below the long-term average for the first time in two years.

Monthly rainfall in August 2023, and February, March and May 2024 were less than half of the monthly average.

# GHHP: A YEAR IN REVIEW



welcomed two new partners, bringing the total to

25



outreach events



engagement events



meetings and working groups



one

highly commended award



500

report cards printed



400+

Above & Below reports distributed



300+

educational resources used

## MARKETING & COMMUNICATIONS

1145 social media followers

670 Harbour Heroes newsletter subscribers

158% increase in website visitors

3724 unique website visitors

26K digital marketing impressions



## ACKNOWLEDGEMENT OF COUNTRY

The Gladstone Healthy Harbour Partnership acknowledges the Traditional Owners of the land and sea in the Port Curtis Coral Coast region, the Gurang, Gooreng Gooreng, Taribelang Bunda and Bailai people and pays respect to Elders past, present and emerging.

The Gladstone Healthy Harbour Partnership (consisting of the following partners) monitors and reports on the health of Gladstone Harbour. This annual Report Card has been prepared by an Independent Science Panel for the Partnership.



For more information or resources please contact:

Gladstone Healthy Harbour Partnership (GHHP)  
PO Box 1319, Gladstone, Queensland, 4680  
po@ghhp.org.au | www.ghhp.org.au

This publication may be used for research, individual study and educational purposes. Properly acknowledged quotations may be used, but queries regarding republication of any material must be addressed to GHHP.

Photo credits: Hannah King.

COMPLETED: November 2024